



**American Arborvitae** – Broad-based, upright, conical to pyramidal shaped often single-trunked, evergreen tree. Green, scale-like foliage in flat sprays that does not yellow in the winter. Great for windbreaks, screening, and tall hedges. Grows 25-40 feet high by 10-15 feet wide in sun to part shade.



**Douglas Fir** - Native to the western United States, this is a symmetrical, narrow, conical evergreen conifer. It typically grows to 40-80' tall and 12-20' wide. Beautiful Christmas tree, picturesque ornamental, great in masses for screening.



**White Pine** – A majestic evergreen, this very hardy pine grows to 50-80' tall x 20-40' wide. Needles are soft and bluish green in color, Bark is thin, smooth and greenish-brown, darkening as tree matures. With adequate moisture, growth can be 12" to 18" per year. Ideal for specimen planting, shade, and windbreaks.



**Scotch Pine** – The Scotch pine is a fast-growing, medium-sized evergreen conifer that usually grows to 30 to 60 feet in height and 30 to 40 feet in width. It has a conical to columnar habit and then develops an open rounded irregular crown as it ages. The needles are short, twisted, and bluish-green, The best growing conditions include full sun and well-drained, acidic soil. It will tolerate a variety of soil types including poor soils, dry sites, and urban conditions. It is easily transplanted.



**Serbian Spruce** - A stunning, graceful landscape tree. Beautiful as a single garden specimen or in groupings. Narrow, pyramidal, spire-like tree with pendant branches that ascend at the tips. Flattened bright green needles have silvery undersides. It grows to 50-60' tall by 15-20' wide in full sun to part shade.



**American Elderberry** – Great for jellies, syrups, pies, wines, and brandies. Native to eastern North America. It is a deciduous, somewhat sprawling, suckering shrub that typically grows to 5-12' tall. Prefers medium to wet, well-drained soils in full sun to part shade but tolerates a wide range of soils. Spreads by root suckers to form colonies.



**American Redbud** – A small flat-topped tree, producing purple blooms on bare stems in early spring. Foliage is large and heart shaped, changing to yellow in the fall. Does well in a protected location. Stunning in spring bloom.



**Blueberries** - You will receive two different cultivars of Highbush Blueberry so you'll get great cross pollination. Blueberries are great for preserves, baking, freezing, and fresh eating. They also provide some nice landscape value with a bloom of white flowers in May and fiery red color in the fall. Blueberry plants are self-fertile, but cross-pollination produces a better crop — creating larger yields of larger berries. Blueberries grow 7' tall by 8' wide at maturity, and need highly



**Buttonbush** – is a somewhat coarse, deciduous shrub with an open-rounded habit that typically grows 6-12' tall. It loves wet, swampy areas and pond/stream margins. It has long, glossy bright green leaves and white pincushion like flower heads that are very attractive to hummingbirds, butterflies, and other insect pollinators.



**Paw Paw** – This North American native produces an oblong fruit that weighs six to twelve ounces. The fruit has a deep yellow, creamy textured flesh, and a taste described as a cross between a banana, mango, and pineapple. It will grow to about ten feet tall when given sunlight and space. Paw Paws like well-drained soil. They need only moderate soil fertility. They are most productive in full sun, but will tolerate some shade.



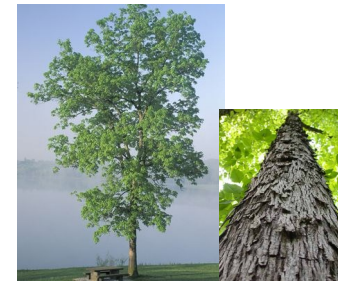
**Persimmon** - A native deciduous tree with a rounded oval crown that grows to 35-60' tall. It is easily grown in average, dry to medium, well-drained soils in full sun to part shade. Somewhat wide range of soil tolerance, but prefers moist, sandy soils. Drought tolerant. Persimmon fruit is sweet and may be eaten off the tree. Fruits are commonly used in syrups, jellies, ice creams or pies.



**Red Osier Dogwood**- is an upright spreading, suckering shrub that typically grows to 6-9' tall with a slightly larger spread. Thrives in wet swampy areas, wetland margins or along lakes and rivers. Leaves turn red to orange in autumn. Reddish stems turn bright red in winter and are particularly showy against a snowy backdrop. Tiny, fragrant, white flowers give way to clusters of whitish fruit in summer.



**Scarlet Oak** - Large deciduous tree with a rounded, open habit which eventually matures to 50-70' tall x 40-50' wide. Foliage is a glossy green in summer turning to scarlet in fall. Great shade tree.



**Shagbark Hickory** - This Midwest native is named for its bark, which peels away in large, flat, curving plates, giving the tree a shaggy appearance. As a member of the walnut family, the hickory produces edible nuts. Can grow 60-80' high x 30-50' wide. Great shade tree for full or part sun.



**White Dogwood** - A small, deciduous flowering tree that typically grows 15-30' tall and wide, with a low-branching, broadly-pyramidal but somewhat flat-topped habit. Bloom occurs in early spring in full sun or part shade.



**Everbearing Strawberry Plants**- Strawberries are one of the easiest fruits for the home gardener to grow and one of the most rewarding. This perennial blooms spring and summer prior to bearing fruit. Will produce large juicy berries throughout the summer. Comes bare-root.



**Asparagus** - (Purple Passion) Unlike most vegetables, asparagus plants are perennial, which means the same plants grow in your garden year after year. Purple Passion is a unique asparagus variety. Its special, attractive purple color, flavor, and tenderness distinguish it from others. For best performance, we recommend plant spacing for Purple Passion is 6-8 inches apart in the row instead of the usual 12-inch spacing. Comes bare-root.



**Butterfly and Hummingbird Wildflower Seed Mix**— Attract pollinators to your garden with this collection of colorful native wildflowers. 1 ounce packet covers 250—340 square feet. Best in part to full sun.

Proceeds benefit our Environmental Education Programs

Thank you for your support!



LAWRENCE COUNTY  
CONSERVATION DISTRICT