



**INDEPENDENCE
EXCAVATING**
A DIGeronimo Company

Cover letter for
241414 Stonecrest Business Park
Site Storm Water Asbuilts

Items attached to this cover letter:

- Plan sheets for Stonecrest Business Park Storm Networks provided by GAI Consultants with asbuilt information (Sheets 16 & 17 of 45 – 42”x 30”)
- Profile sheets for Stonecrest Business Park Storm Networks Provided by GAI Consultants with asbuilt information (Sheets 26 & 27 of 45 – 42”x 30”)

All items listed above shall be considered sealed via the State of Pennsylvania Registered Land Surveyor stamp and signature affixed to this cover letter.

Zachary Hayes

Digitally signed by Zachary
Hayes
DN: C=US,
E=zhayes@indexc.com,
O=Independence
Excavating, CN=Zachary
Hayes
Reason: I attest to the
accuracy and integrity of this
document.
Date: 2026.01.07
10:47:37-05'00'



Reason: I attest to the accuracy and integrity of this document.
 Date: 2023.01.07, N/T
 10:47:39 AM, No. 2009-002364
 TAX PARCEL No. 17-1206-101
 CONTROL No. 17-007800 & 17007900

N/T
 FRANK & JO ELLEN SOKOLOSKI
 TAX PARCEL No. 17-1206-101B
 CONTROL No. 17-067300

N/T
 FRANK & JO ELLEN SOKOLOSKI
 TAX PARCEL No. 17-1206-101B
 CONTROL No. 17-067300

N/T
 FRANK & JO ELLEN SOKOLOSKI
 TAX PARCEL No. 17-1206-101B
 CONTROL No. 17-067300

N/T
 FRANK & JO ELLEN SOKOLOSKI
 TAX PARCEL No. 17-1206-101B
 CONTROL No. 17-067300

N/T
 FRANK & JO ELLEN SOKOLOSKI
 TAX PARCEL No. 17-1206-101B
 CONTROL No. 17-067300

N/T
 FRANK & JO ELLEN SOKOLOSKI
 TAX PARCEL No. 17-1206-101B
 CONTROL No. 17-067300

N/T
 FRANK & JO ELLEN SOKOLOSKI
 TAX PARCEL No. 17-1206-101B
 CONTROL No. 17-067300

N/T
 FRANK & JO ELLEN SOKOLOSKI
 TAX PARCEL No. 17-1206-101B
 CONTROL No. 17-067300

N/T
 FRANK & JO ELLEN SOKOLOSKI
 TAX PARCEL No. 17-1206-101B
 CONTROL No. 17-067300

N/T
 FRANK & JO ELLEN SOKOLOSKI
 TAX PARCEL No. 17-1206-101B
 CONTROL No. 17-067300

N/T
 FRANK & JO ELLEN SOKOLOSKI
 TAX PARCEL No. 17-1206-101B
 CONTROL No. 17-067300

N/T
 FRANK & JO ELLEN SOKOLOSKI
 TAX PARCEL No. 17-1206-101B
 CONTROL No. 17-067300

N/T
 FRANK & JO ELLEN SOKOLOSKI
 TAX PARCEL No. 17-1206-101B
 CONTROL No. 17-067300

N/T
 FRANK & JO ELLEN SOKOLOSKI
 TAX PARCEL No. 17-1206-101B
 CONTROL No. 17-067300

N/T
 FRANK & JO ELLEN SOKOLOSKI
 TAX PARCEL No. 17-1206-101B
 CONTROL No. 17-067300

N/T
 FRANK & JO ELLEN SOKOLOSKI
 TAX PARCEL No. 17-1206-101B
 CONTROL No. 17-067300

N/T
 FRANK & JO ELLEN SOKOLOSKI
 TAX PARCEL No. 17-1206-101B
 CONTROL No. 17-067300

N/T
 FRANK & JO ELLEN SOKOLOSKI
 TAX PARCEL No. 17-1206-101B
 CONTROL No. 17-067300

N/T
 FRANK & JO ELLEN SOKOLOSKI
 TAX PARCEL No. 17-1206-101B
 CONTROL No. 17-067300

N/T
 FRANK & JO ELLEN SOKOLOSKI
 TAX PARCEL No. 17-1206-101B
 CONTROL No. 17-067300

N/T
 FRANK & JO ELLEN SOKOLOSKI
 TAX PARCEL No. 17-1206-101B
 CONTROL No. 17-067300

N/T
 FRANK & JO ELLEN SOKOLOSKI
 TAX PARCEL No. 17-1206-101B
 CONTROL No. 17-067300

N/T
 FRANK & JO ELLEN SOKOLOSKI
 TAX PARCEL No. 17-1206-101B
 CONTROL No. 17-067300

N/T
 FRANK & JO ELLEN SOKOLOSKI
 TAX PARCEL No. 17-1206-101B
 CONTROL No. 17-067300

N/T
 FRANK & JO ELLEN SOKOLOSKI
 TAX PARCEL No. 17-1206-101B
 CONTROL No. 17-067300

N/T
 FRANK & JO ELLEN SOKOLOSKI
 TAX PARCEL No. 17-1206-101B
 CONTROL No. 17-067300

N/T
 FRANK & JO ELLEN SOKOLOSKI
 TAX PARCEL No. 17-1206-101B
 CONTROL No. 17-067300

N/T
 FRANK & JO ELLEN SOKOLOSKI
 TAX PARCEL No. 17-1206-101B
 CONTROL No. 17-067300

N/T
 FRANK & JO ELLEN SOKOLOSKI
 TAX PARCEL No. 17-1206-101B
 CONTROL No. 17-067300

N/T
 FRANK & JO ELLEN SOKOLOSKI
 TAX PARCEL No. 17-1206-101B
 CONTROL No. 17-067300

N/T
 FRANK & JO ELLEN SOKOLOSKI
 TAX PARCEL No. 17-1206-101B
 CONTROL No. 17-067300

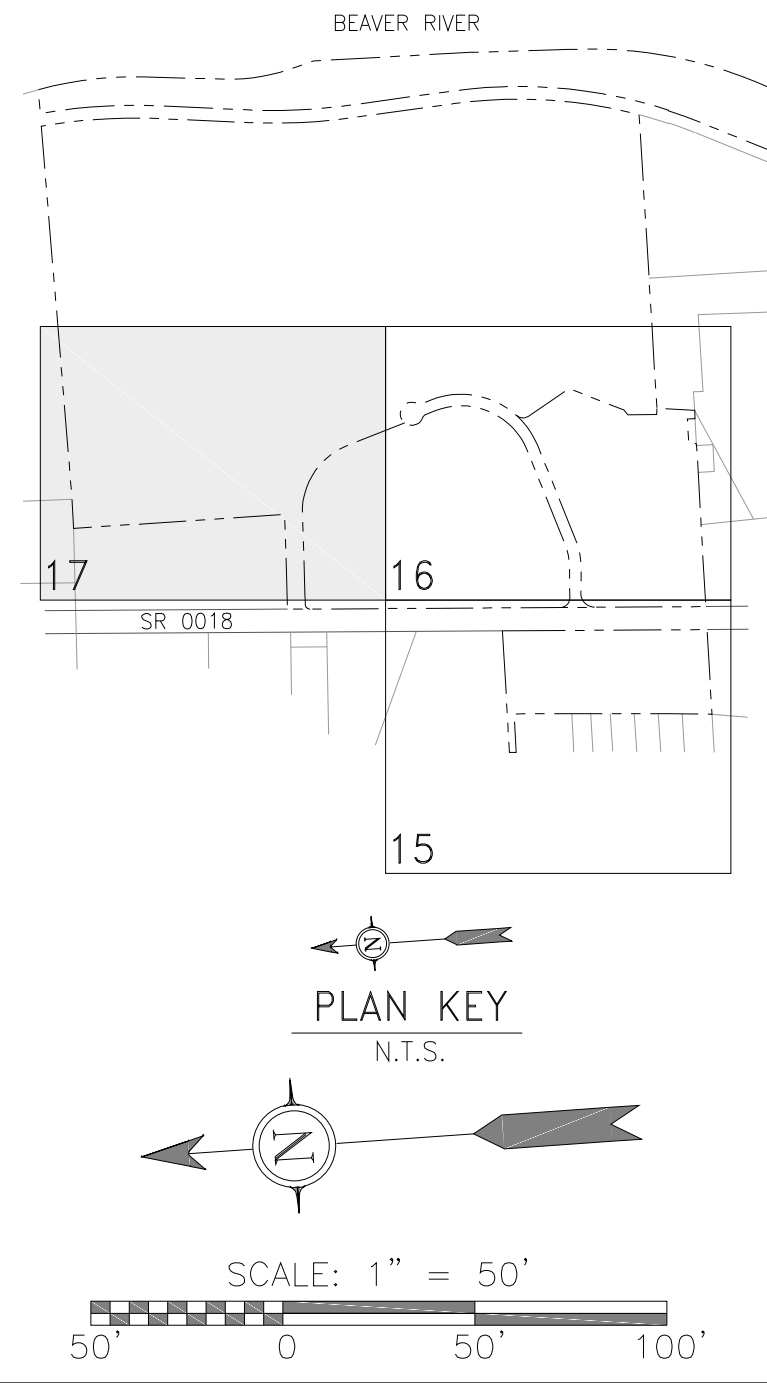
GENERAL NOTES:

- UNDERGROUND FACILITIES, STRUCTURES, AND UTILITIES HAVE BEEN PLOTTED BY GAI CONSULTANTS FROM A COMBINATION OF OBSERVED EVIDENCE, FIELD SURVEYS AND AVAILABLE RECORD PLANS. LACKING EXCAVATION, THE EXACT LOCATION OF UNDERGROUND FEATURES CANNOT ACCURATELY, COMPLETELY AND RELIABLY BE DEPICTED, THEREFORE, THEIR LOCATIONS AND SIZES MUST BE CONSIDERED APPROXIMATE. THERE MAY BE OTHER UNDERGROUND FACILITIES WHOSE EXISTENCE IS PRESENTLY UNKNOWN. DURING DEMOLITION, EXCAVATION, OR CONSTRUCTION ACTUAL CONDITIONS ARE DISCOVERED TO DIFFER FROM THOSE INDICATED ON THE DOCUMENTS, THE ENGINEER SHALL BE NOTIFIED IMMEDIATELY.
- SEE POST CONSTRUCTION STORMWATER MANAGEMENT PLANS AND STORM SEWER PROFILES FOR PERTINENT INFORMATION ON THE PROPOSED STORM SEWERS.
- SEE SANITARY SEWER PROFILES FOR PERTINENT INFORMATION ON THE SANITARY SEWERS.
- FOR PERTINENT INFORMATION ON THE SR 0018 ROADWAY IMPROVEMENTS AND PROPOSED SITE ENTRANCES, SEE HIGHWAY OCCUPANCY PERMIT PLANS PREPARED BY HERBERT, ROWLAND, AND GRUBIC, INC. (HRG).

WATER MAIN NOTES:

- WATER MAINS MUST HAVE A MINIMUM 18" VERTICAL CLEARANCE WITH ALL UTILITIES.
- WATER MAINS MUST HAVE A MINIMUM 3' HORIZONTAL CLEARANCE WITH ALL UTILITIES; SHARING OF TRENCHES WITH GAS, ELECTRIC, ETC. WILL NOT BE ACCEPTED.
- WATER MAINS MUST HAVE A MINIMUM 18" HORIZONTAL CLEARANCE BETWEEN UTILITY SERVICE LINES.
- CURB BOXES TO BE LOCATED AT PROPERTY LINE AND 5' AWAY FROM UNDERGROUND UTILITIES. METER PITS TO BE INSTALLED APPROXIMATELY 5' FROM CURB BOX.
- CURB BOXES CANNOT BE LOCATED IN DRIVEWAYS OR SIDEWALKS.
- COORDINATE CONNECTIONS TO EXISTING LINES WITH PENNSYLVANIA AMERICAN WATER (PAW).

N/T
 FRANK & JO ELLEN SOKOLOSKI
 DOC No. 2000-001186
 TAX PARCEL No. 17-1206-100
 CONTROL No. 17-066800



NO.	DATE	DRAWN BY	CHECKED BY	APPROVED BY	DESCRIPTION
8	11/16/2023	C. WALTERS	K. VASAS	K. VASAS	ADDENDUM 2: LOT 3 REGRADING, ROW REVISIONS, PUMP STATION LAYOUT UPDATE, SANITARY SEWER CHANGE
7	1/11/2023	C. WALTERS	K. VASAS	K. VASAS	ADDENDUM 1: ETC. LOCATION UPDATES, CHANGES TO LOT 2 WORK
6	09/20/2023	C. WALTERS	K. VASAS	K. VASAS	WATERLINE REVISIONS
5	07/14/2023	C. WALTERS	K. VASAS	K. VASAS	LAWRENCE COUNTY CONSERVATION DISTRICT COMMENT REVISIONS
4	02/13/2023	C. WALTERS	K. VASAS	K. VASAS	NEW BEAVER BOROUGH COMMENT REVISIONS
3	12/16/2022	C. WALTERS	K. VASAS	K. VASAS	NPDES MAJOR AMENDMENT
2	09/08/2022	C. WALTERS	M. HANDEYENNE	J. GREBNE	LAWRENCE COUNTY CONSERVATION DISTRICT COMMENT REVISIONS
1	04/20/2022	C. WALTERS	M. EISEN	J. GREBNE	LAWRENCE COUNTY CONSERVATION DISTRICT COMMENT REVISIONS

UTILITY PLAN

CLIENT: **STONECREST BUSINESS PARK, LP**
 100 3RD STREET
 CHARLEROI, PA 15022

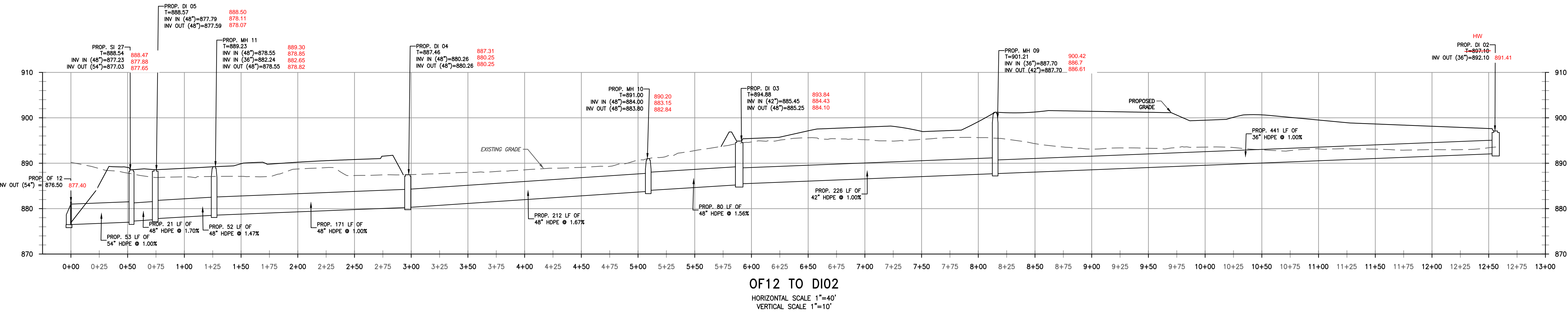
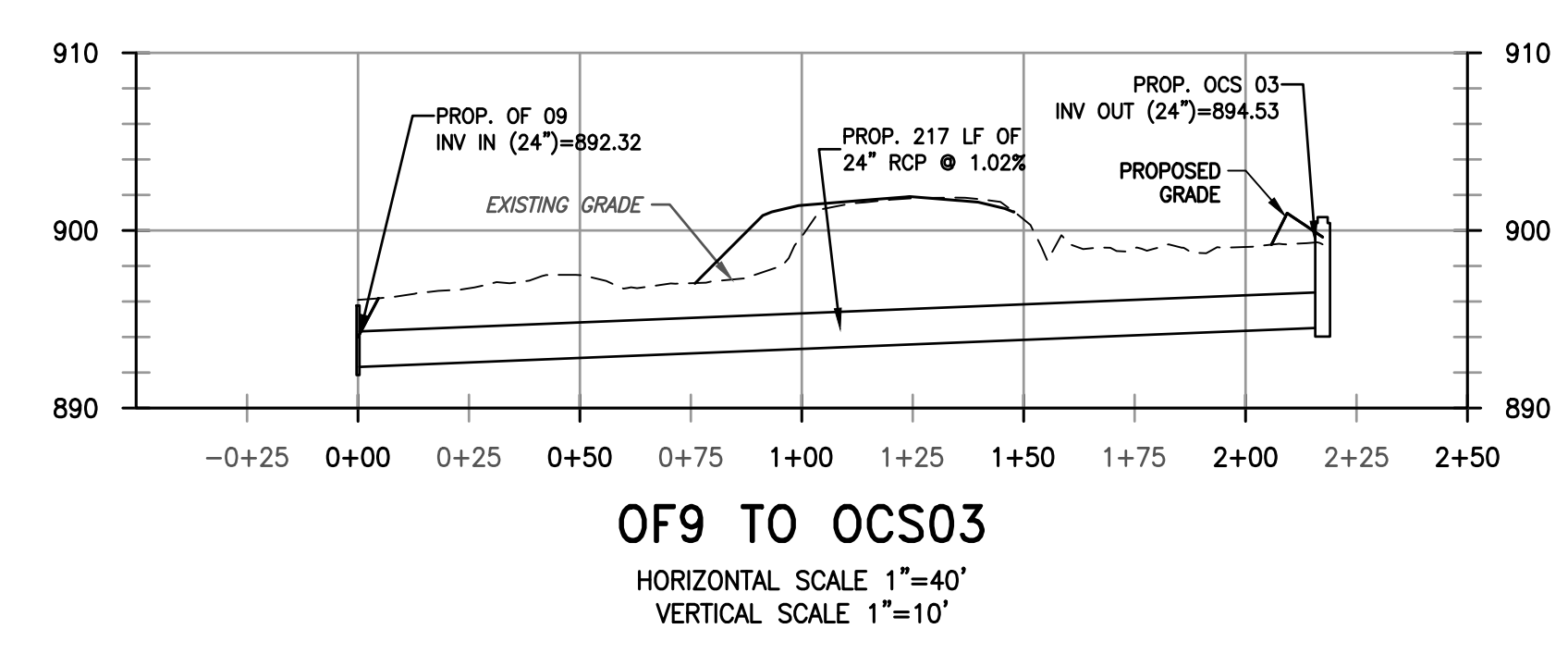
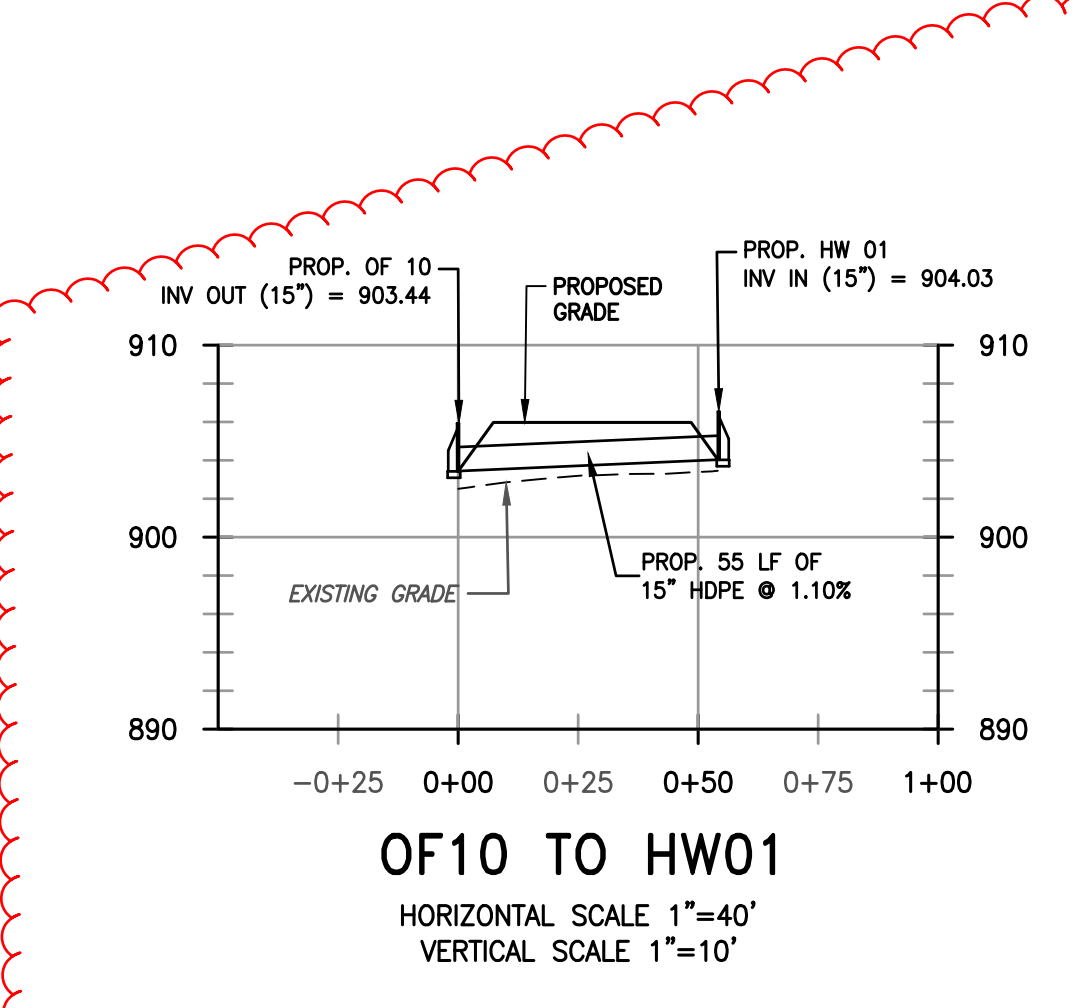
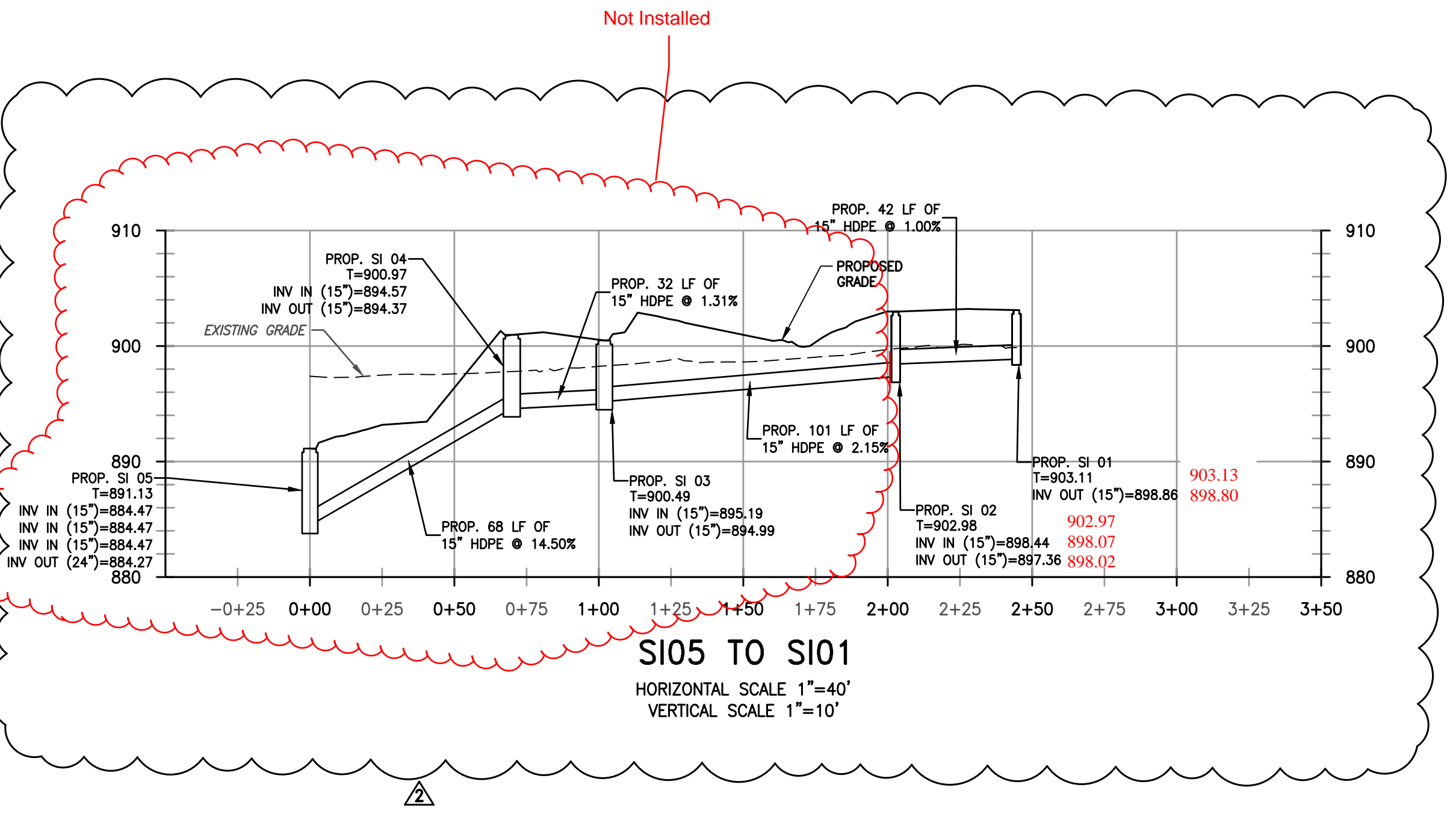
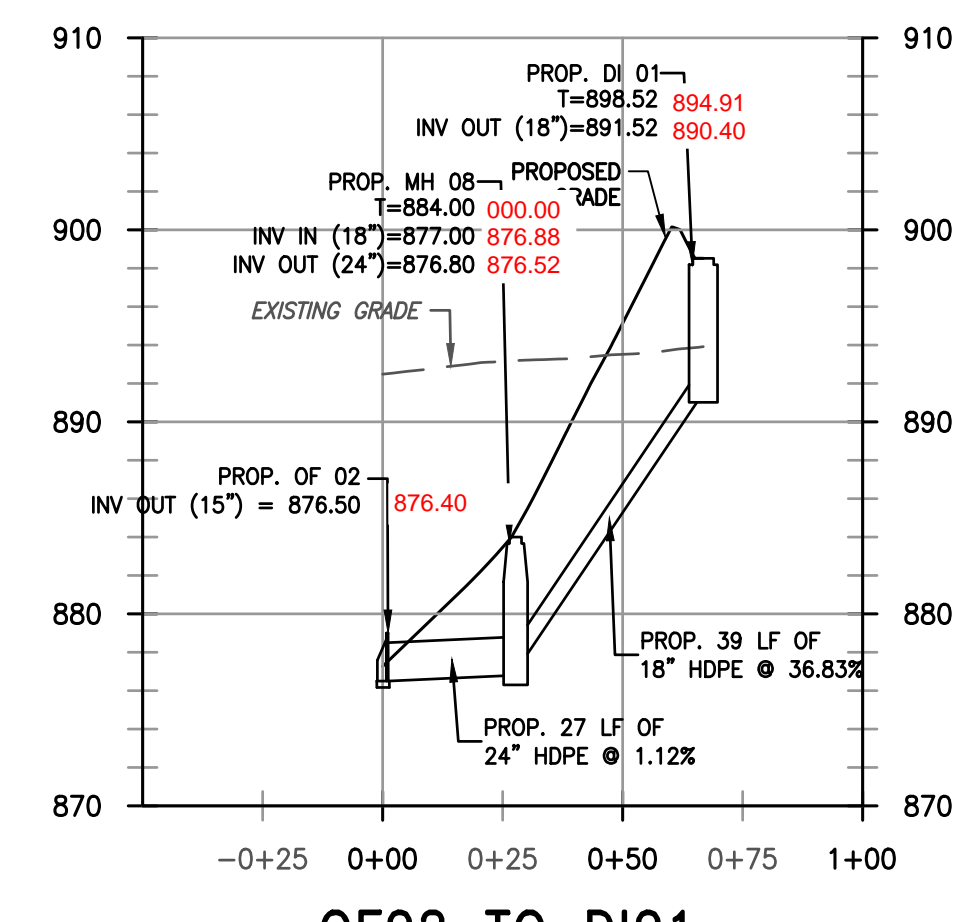
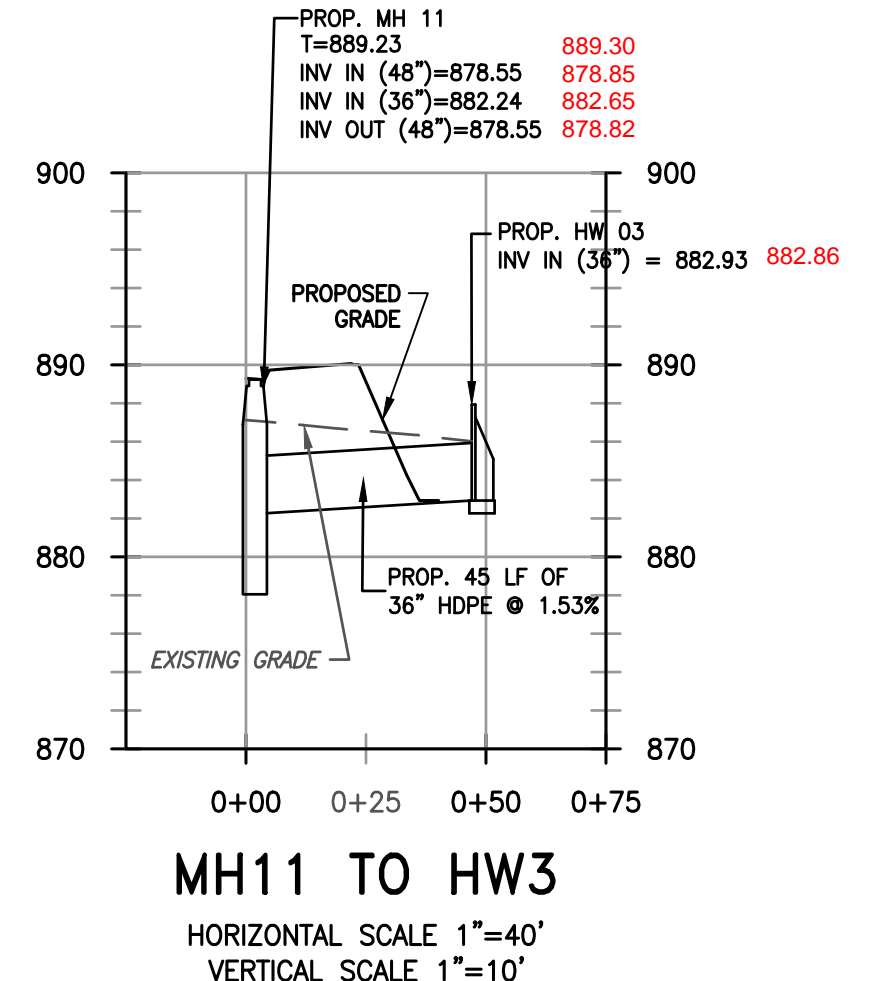
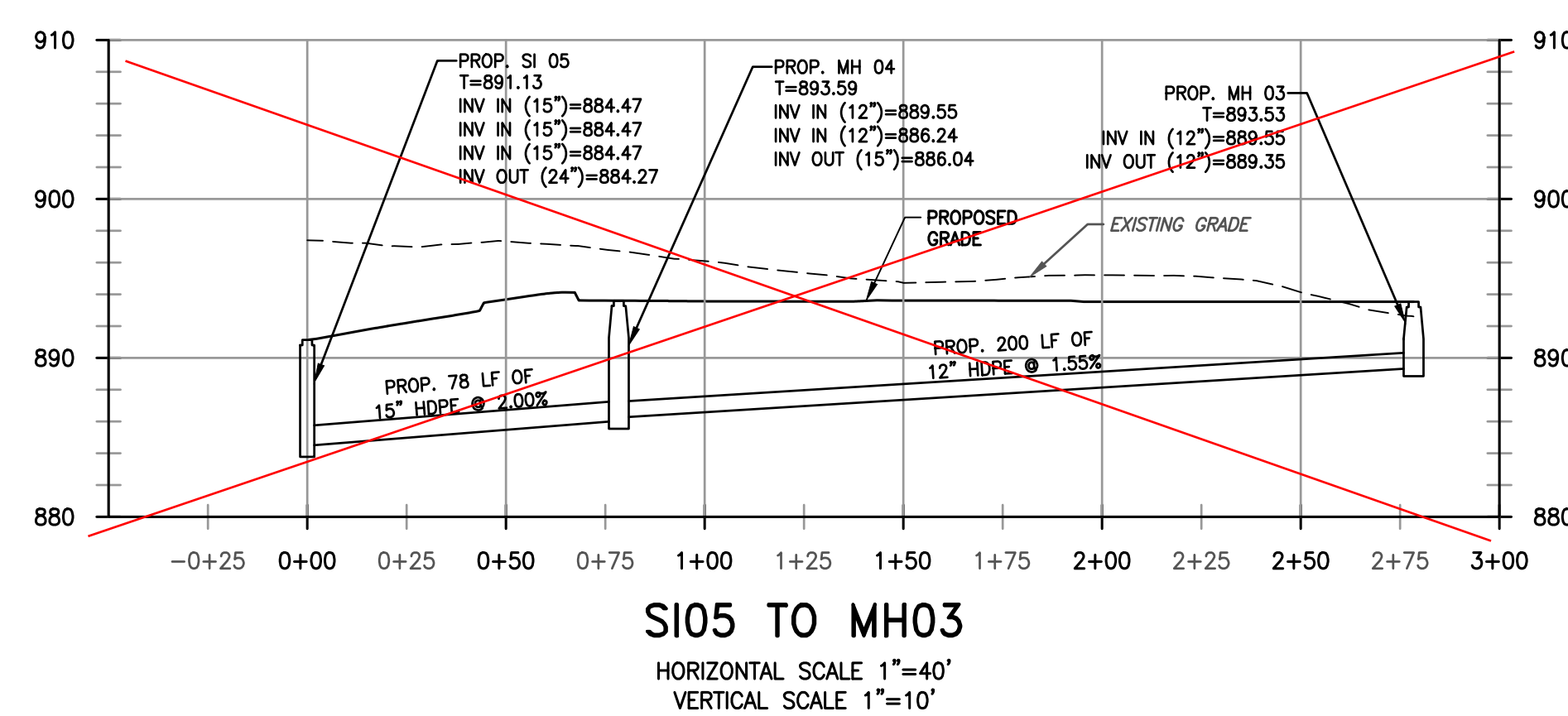
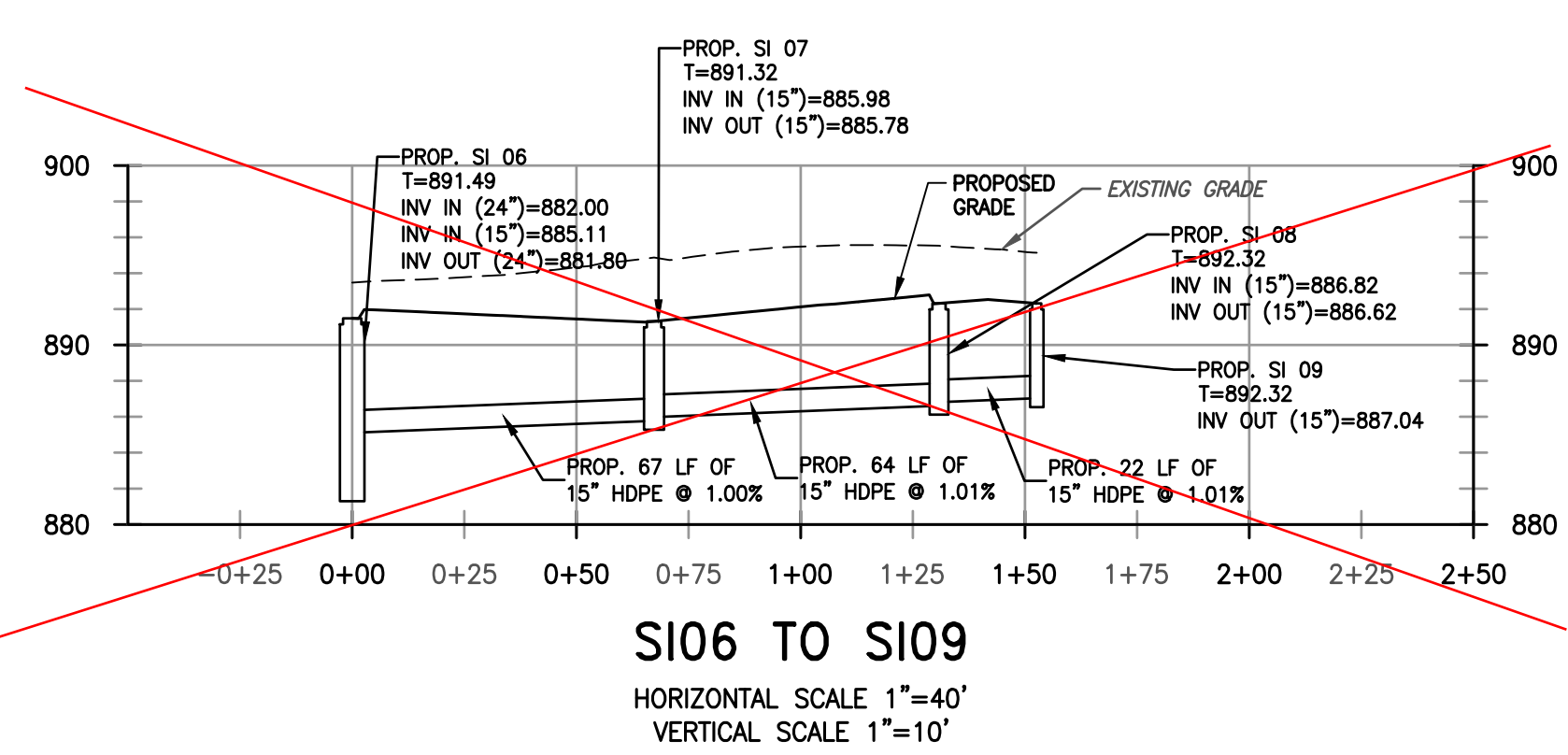
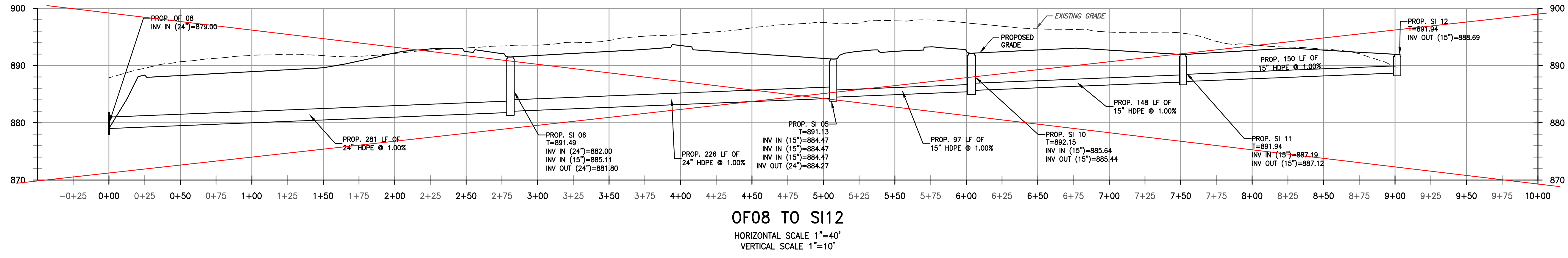
PROJECT: **STONECREST BUSINESS PARK**
 NEW BEAVER BOROUGH
 LAWRENCE COUNTY, PENNSYLVANIA 15167

ISSUING OFFICE: Cranberry / 600 Cranberry Woods Drive, Suite 400, Cranberry Township, PA 15066

PRODUCTION: P20230159-07-004-001-C-E1-015.dwg | PLOTTED: 01/02/2024 10:19:42 PM | PLOTTED BY: Cameron S. Meisner | PLOT FILE: DS_P20230159.dwg

© 2023 GAI Consultants
 GAI FILE NUMBER: **R200159-07-004-001-C-E1-015**
 ALT. CLIENT DRAWING NUMBER:
 GAI DRAWING NUMBER: **017**
 ISSUE DATE: **03/29/2022** | DRAWN BY: **S. VOETTNER**
 SCALE: **AS SHOWN** | CHECKED BY: **M. EISEN**
 DWG TYPE: **AS SHOWN** | APPROVED BY: **K. VASAS**

REVISION: **8** | SHEET NO.: **17 OF 45**



See HOP Plans for information

DRAWING TITLE STORM SEWER PROFILES		CLIENT STONECREST BUSINESS PARK, LP 100 3RD STREET CHARLEROI, PA 15022
PROJECT STONECREST BUSINESS PARK NEW BEAVER BOROUGH LAWRENCE COUNTY, PENNSYLVANIA 15157	 gai consultants	
 KEITH C. VASAS REGISTERED PROFESSIONAL ENGINEER PE078301 PENNSYLVANIA		
© 2024 GAI Consultants		
GAI FILE NUMBER: R200159-07-004-001-C-E1-026		
ALT./CLIENT DRAWING NUMBER:		
GAI DRAWING NUMBER: 027		
ISSUE DATE: 03/29/2022	DRAWN BY: J.CONSOLO	
SCALE:	CHECKED BY:	
AS SHOWN	M.EISEN	
DWG TYPE:	APPROVED BY:	
	K.VASAS	
REVISION 2	SHEET NO.: 27 OF 45	

ISSUING OFFICE: Cranberry | 600 Cranberry Woods Drive, Suite 400, Cranberry Township, PA 16066
 (Production/Issued for Construction/PO0109-07-004-001-C-E1-026.dwg PLOTTED ON: 4/23/2024 11:13:24 AM PLOTTED BY: Common S. Walters PLOT FILE: L05_STWARG04B
 This drawing was produced with computer aided drafting technology and is supported by electronic drawing files. Do not revise this drawing via manual drafting methods.